
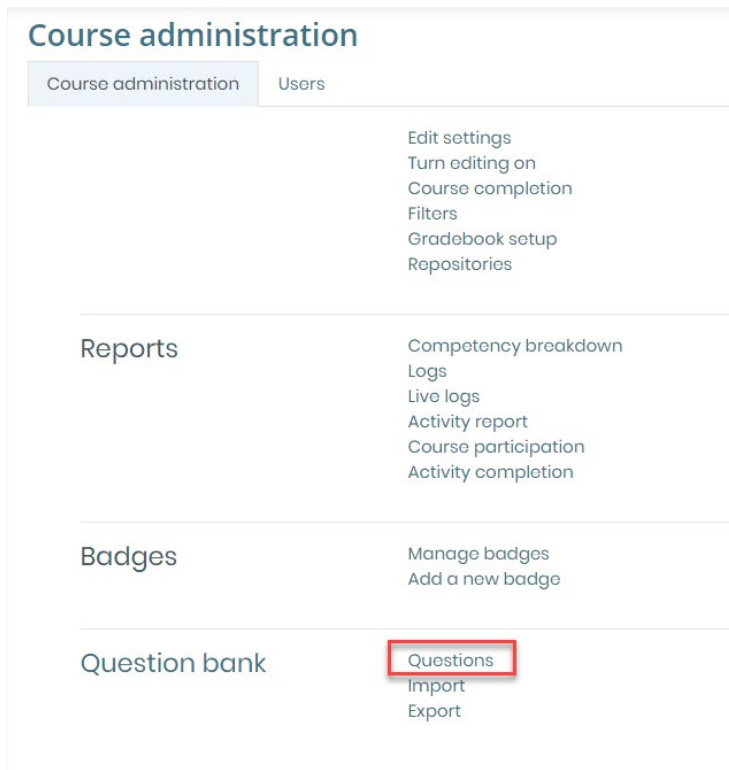


## How Do I Create My Own Quiz Questions?

1. On the course page, click the Actions  button at the top and select the “More...” option
2. Your course administration page will open displaying a series of course settings and action items.
3. Scroll to the bottom of the page to the ‘Question bank’ section, and click ‘Questions’.



Course administration

Course administration Users

Edit settings  
Turn editing on  
Course completion  
Filters  
Gradebook setup  
Repositories

Reports  
Competency breakdown  
Logs  
Live logs  
Activity report  
Course participation  
Activity completion

Badges  
Manage badges  
Add a new badge

Question bank  
Questions  
Import  
Export

4. Under the first dropdown menu, select the Question bank category in which you would like to create the question. This category will be where you find your custom question when adding it to a quiz.

### Question bank

Select a category:

FAT2K58011 (32)

5. To help keep your custom questions organized and separate from the CDX question bank, it is recommended that you store your custom questions in your own custom category.
6. Next, click the ‘Create a new question...’ button

Also show questions from subcategories

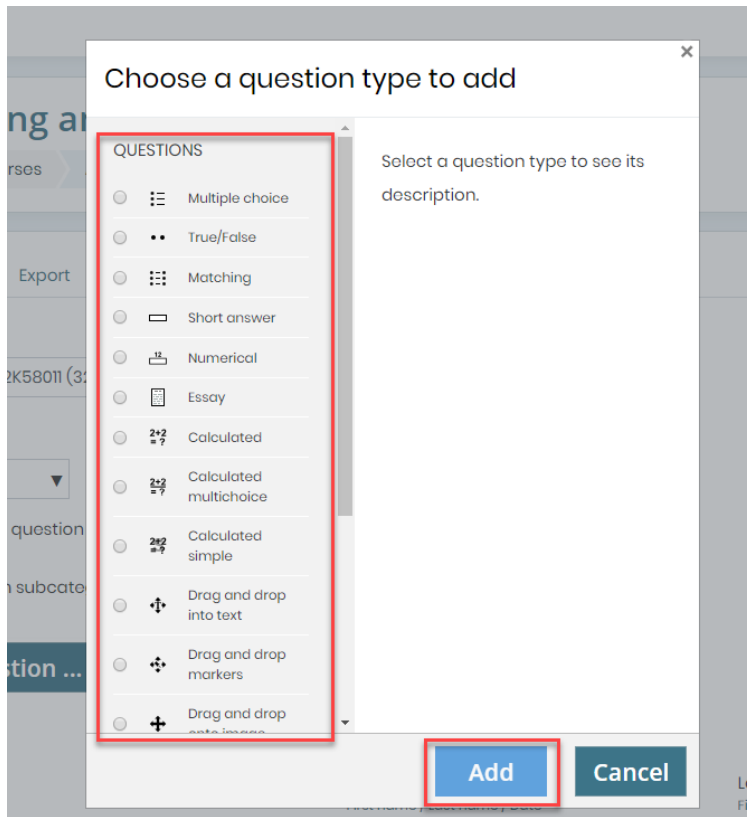
Also show old questions


**Create a new question ...**

1 2 »

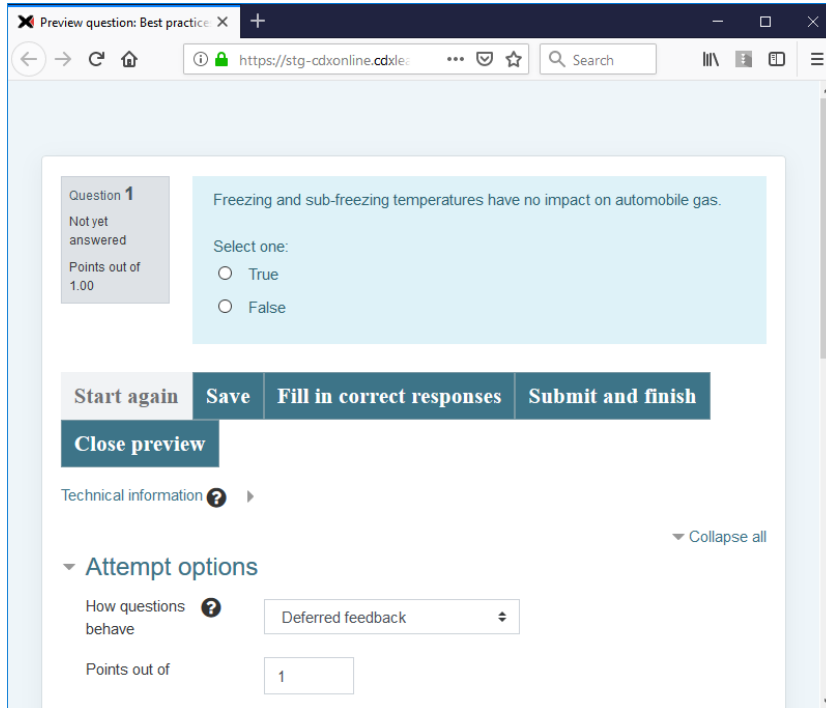
## How Do I Create My Own Quiz Questions?

7. In the popup window, select the type of question you would like to create then click 'Add'.



8. On the following page, populate the required fields marked with a red circle along with other fields or options that may apply.
9. Once you are satisfied with the content of your question, click the "Save changes" button at the bottom of the page.
10. You will be brought back to the Question bank page displaying your new question and you may select the magnifying glass  to preview it.

## How Do I Create My Own Quiz Questions?



The screenshot shows a web browser window with the address bar displaying <https://stg-cdxonline.cdxle>. The page content includes a question preview for "Question 1", which is "Not yet answered" and worth "Points out of 1.00". The question text is "Freezing and sub-freezing temperatures have no impact on automobile gas." Below the question, there are two radio button options: "True" and "False". A row of four buttons is visible: "Start again", "Save", "Fill in correct responses", and "Submit and finish". Below these buttons is a "Close preview" button. Underneath, there is a "Technical information" section with a question mark icon and a right-pointing arrow. To the right of this section is a "Collapse all" link. Below the technical information is an "Attempt options" section. It includes a "How questions behave" dropdown menu currently set to "Deferred feedback" and a "Points out of" input field containing the number "1".